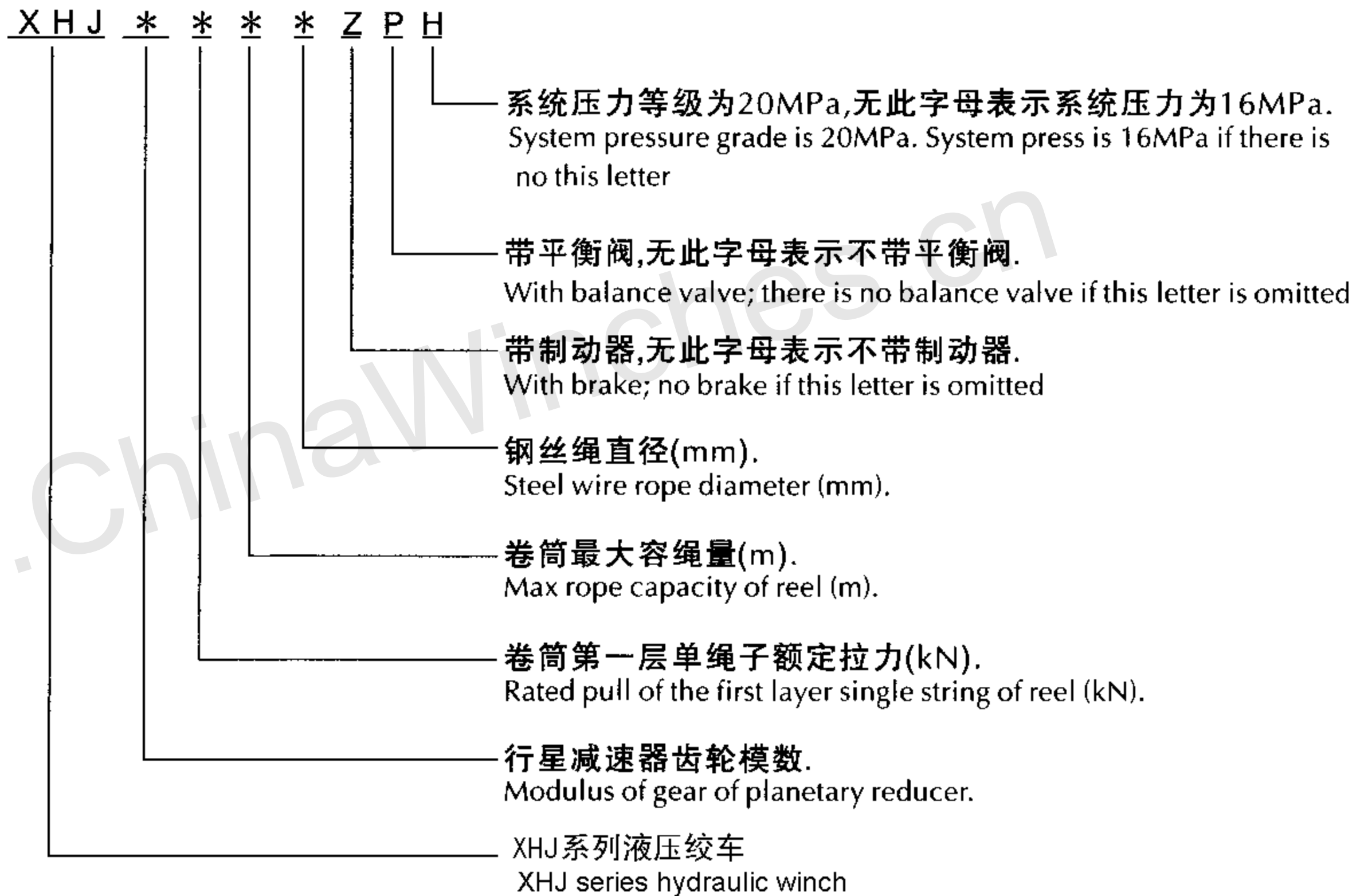


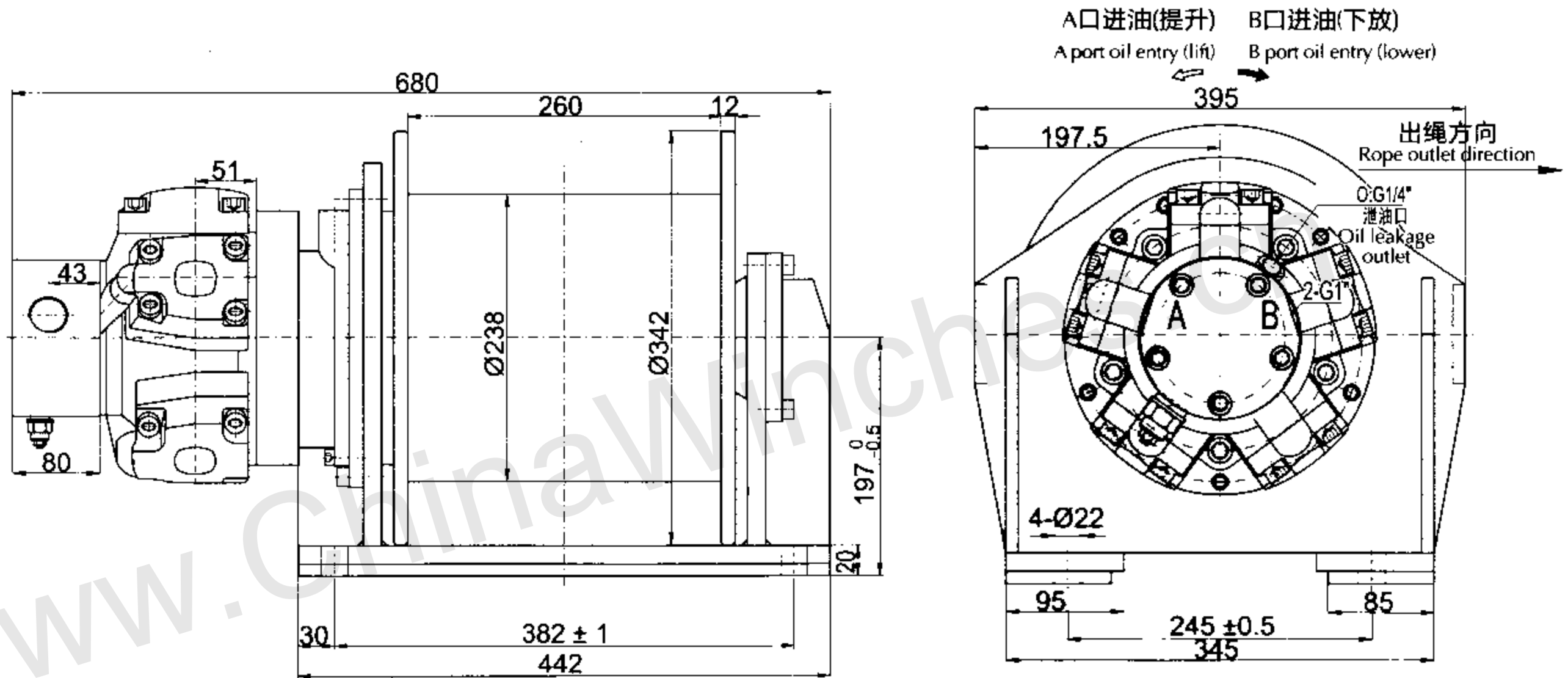
型号说明/Description of Model



参数说明/Description of parameters

- (1)、该系列绞车的总排量为卷筒每转一转的供油量。
 - (2)、供油量是泵站的理论流量，即在考虑系统效率90%的情况下所得的计算值。
 - (3)、容绳量为绞车的理论最大容绳量，实际允许的有效容绳量应考虑保留3圈钢丝绳不用，以防绳头脱出。
- (1). The total displacement of the series of winch is the oil supply quantity when the reel rotates one circle.
 - (2). The oil supply quantity is the theoretical flow of the pump station, namely, the calculated value of pump station under the conditions of considering the system efficiency of 90%.
 - (3). The rope capacity of reel is the theoretical max capacity to hold the rope. The actually allowable effective rope capacity should consider keeping 3 loops of steel wire rope unused to prevent the rope end from disengagement.

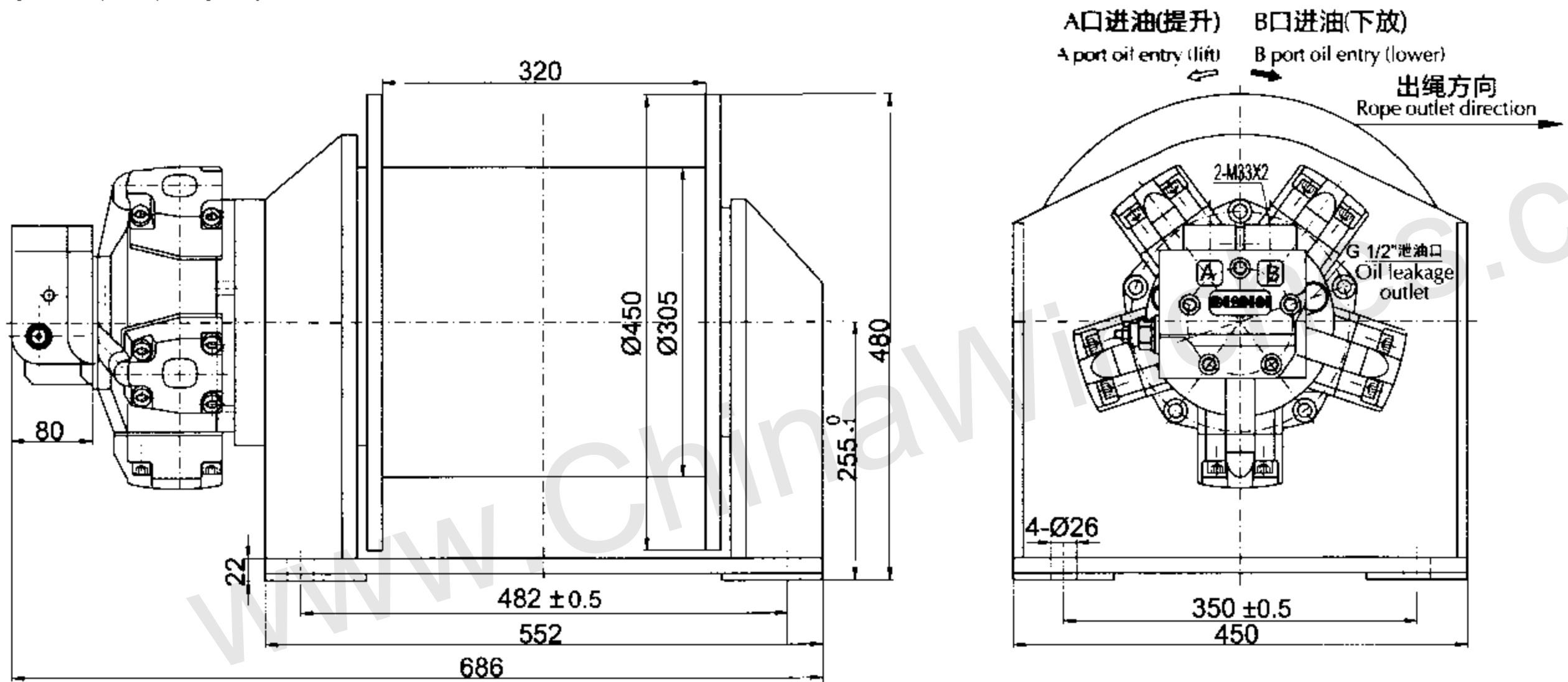
XHJ2.5系列绞车外型尺寸/Series Winch Dimension



XHJ2.5系列绞车技术参数/Series Winch Technical Parameters

型号 Model	第一层 First layer		总排量 Total Displacement (ml/rev)	工作压差 Difference of Working Pressures (MPa)	钢丝绳直径 Steel Wire Diameter (mm)	容绳量 Rope Capacity (m)	液压马达型号 Model of Hydraulic Motor	行星减速器 型号 Model of Planetary Reducer	重量 (kg) Weight (kg)
	拉力(KN) Pull force	绳速(m/min) Rope Speed							
XHJ2.5-10-60-10-ZP	10	0-25	620	15.1	10	60	XHM2-125D51	C2.5A	120
XHJ2.5-20-50-12-ZP	20	0-25	1442	14.0	12	50	XHM2-200D51	C2.5D	120

XHJ3系列绞车外型尺寸/Series Winch Dimension



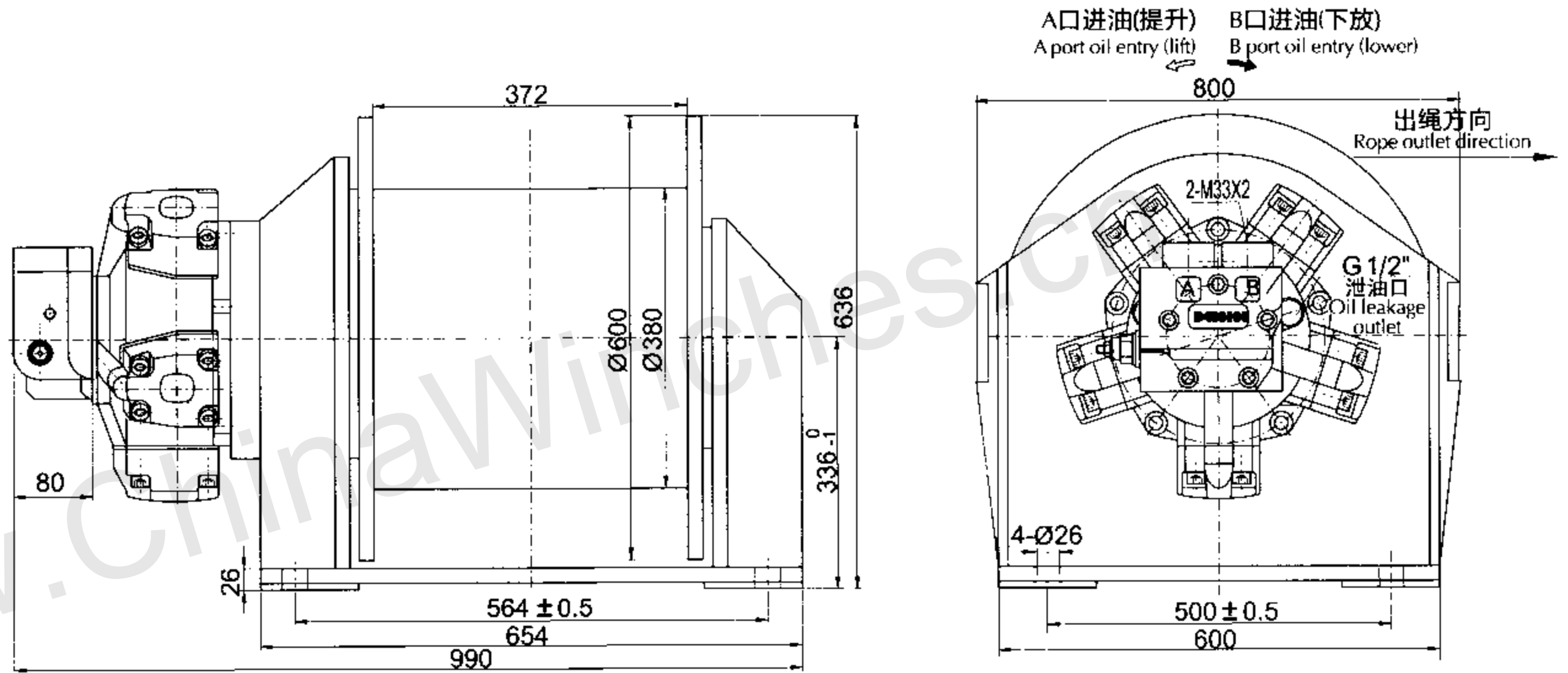
XHJ3系列绞车技术参数/Series Winch Technical Parameters

型号 Model	第一层 First layer		总排量 Total Displacement (ml/rev)	工作压差 Difference of Working Pressures (MPa)	钢丝绳直径 Steel Wire Diameter (mm)	容绳量 Rope Capacity (m)	液压马达型号 Model of Hydraulic Motor	行星减速器 型号 Model of Planetary Reducer	重量 (kg) Weight (kg)
	拉力(KN) Pull force	绳速(m/min) Rope Speed							
XHJ3-30-66-15-ZP	30	0-35	2455	14.5	15	65	XHM6-500D120101	C3A	300
XHJ3-40-64-16-ZP	40	0-35	3267	14.5	16	65	XHM6-600D120101	C3D	300

注：1.工作压差为绞车工作时AB进出油口的压力差;2.容绳量指的是三层时的容绳量

Note: 1.the differential pressure at work and for the winch AB pressure oil mouths, 2 Rope capacity is three layers of rope capacity

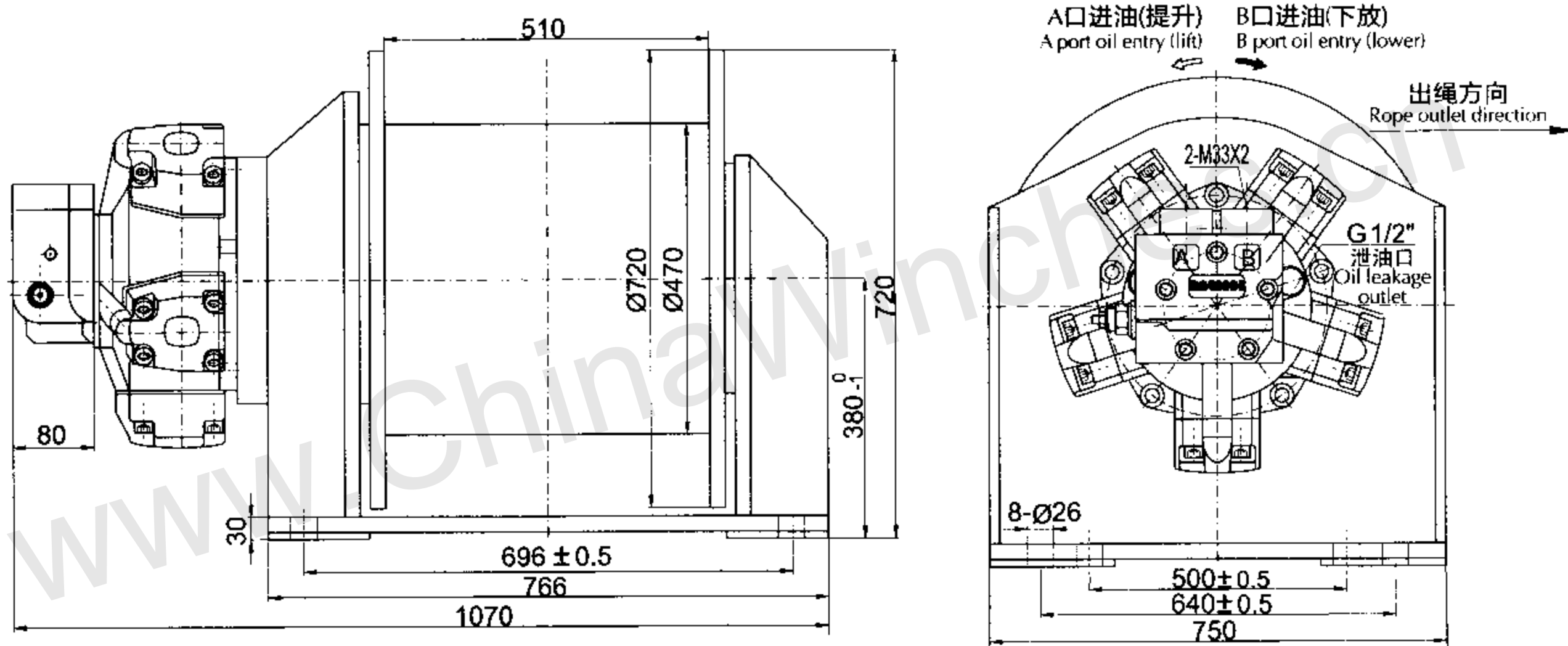
XHJ4系列绞车外型尺寸/Series Winch Dimension



XHJ4系列绞车技术参数/Series Winch Technical Parameters

型号 Model	第一层 First layer		总排量 Total Displacement (ml/rev)	工作压差 Difference of Working Pressures (MPa)	钢丝绳直径 Steel Wire Diameter (mm)	容绳量 Rope Capacity (m)	液压马达型号 Model of Hydraulic Motor	行星减速器 型号 Model of Planetary Reducer	重量 (kg) Weight (kg)
	拉力(KN) Pull force	绳速(m/min) Rope Speed							
XHJ4-50-87-20-ZP	50	0-40	4961	13.6	20	87	XHM11-1000D240101	C4A	685
XHJ4-60-68-21.5-ZP	60	0-40	6138	14.2	21.5	68	XHM11-1100D240101	C4D	685

XHJ5系列绞车外型尺寸/Series Winch Dimension



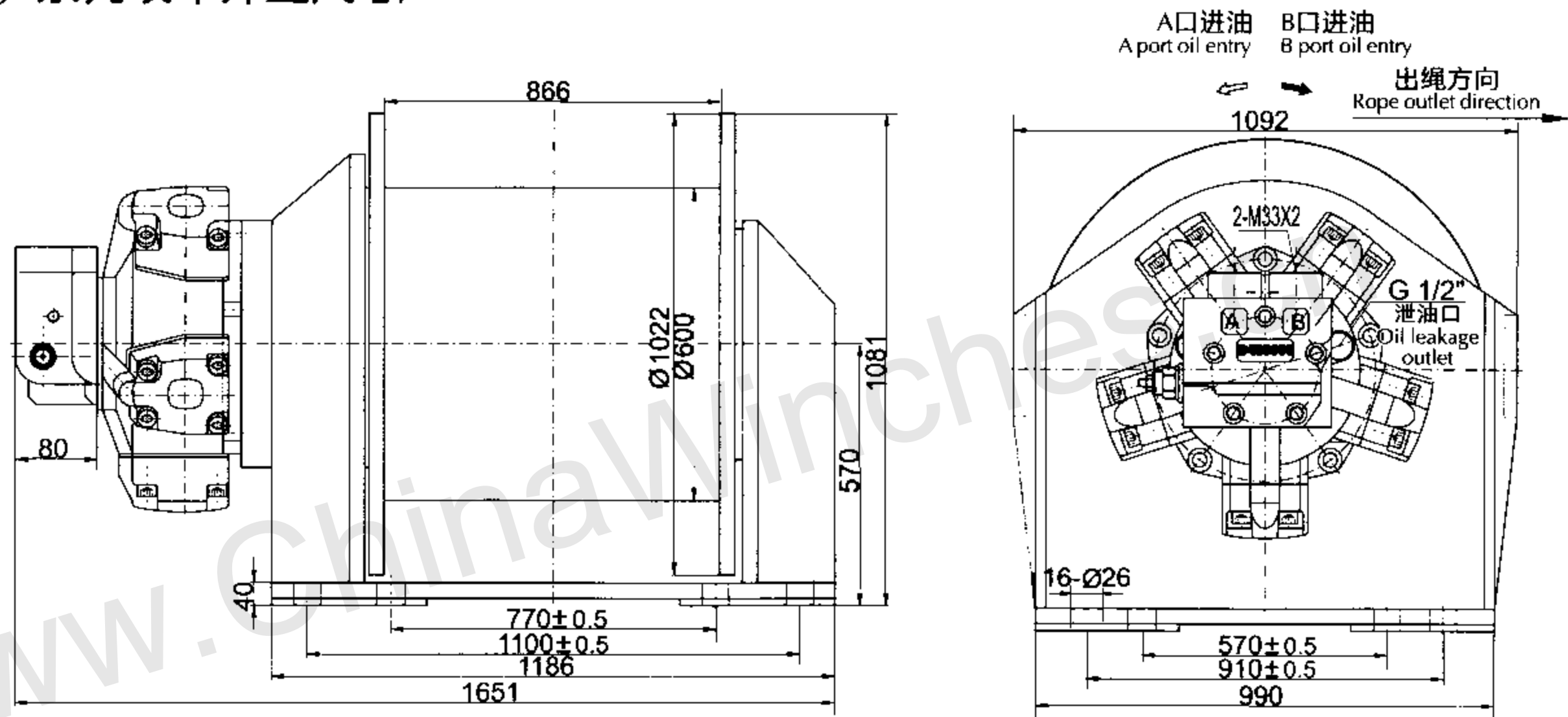
XHJ5系列绞车技术参数/Series Winch Technical Parameters

型号 Model	第一层 First layer		总排量 Total Displacement (ml/rev)	工作压差 Difference of Working Pressures (MPa)	钢丝绳直径 Steel Wire Diameter (mm)	容绳量 Rope Capacity (m)	液压马达型号 Model of Hydraulic Motor	行星减速器 型号 Model of Planetary Reducer	重量 (kg) Weight (kg)
	拉力(KN) Pull force	绳速(m/min) Rope Speed							
XHJ5-80-100-24-ZP	80	0-40	9983	14.5	24	100	XHM16-1800D240101	C5D	1200
XHJ5-100-90-28-ZP	100	0-40	14113	13.0	28	90	XHM16-2500D240101	C5D	1200

注：1.工作压差为绞车工作时AB进出油口的压力差；2.容绳量指的是三层时的容绳量

Note: 1.the differential pressure at work and for the winch AB pressure oil mouths, 2 Rope capacity is three layers of rope capacity

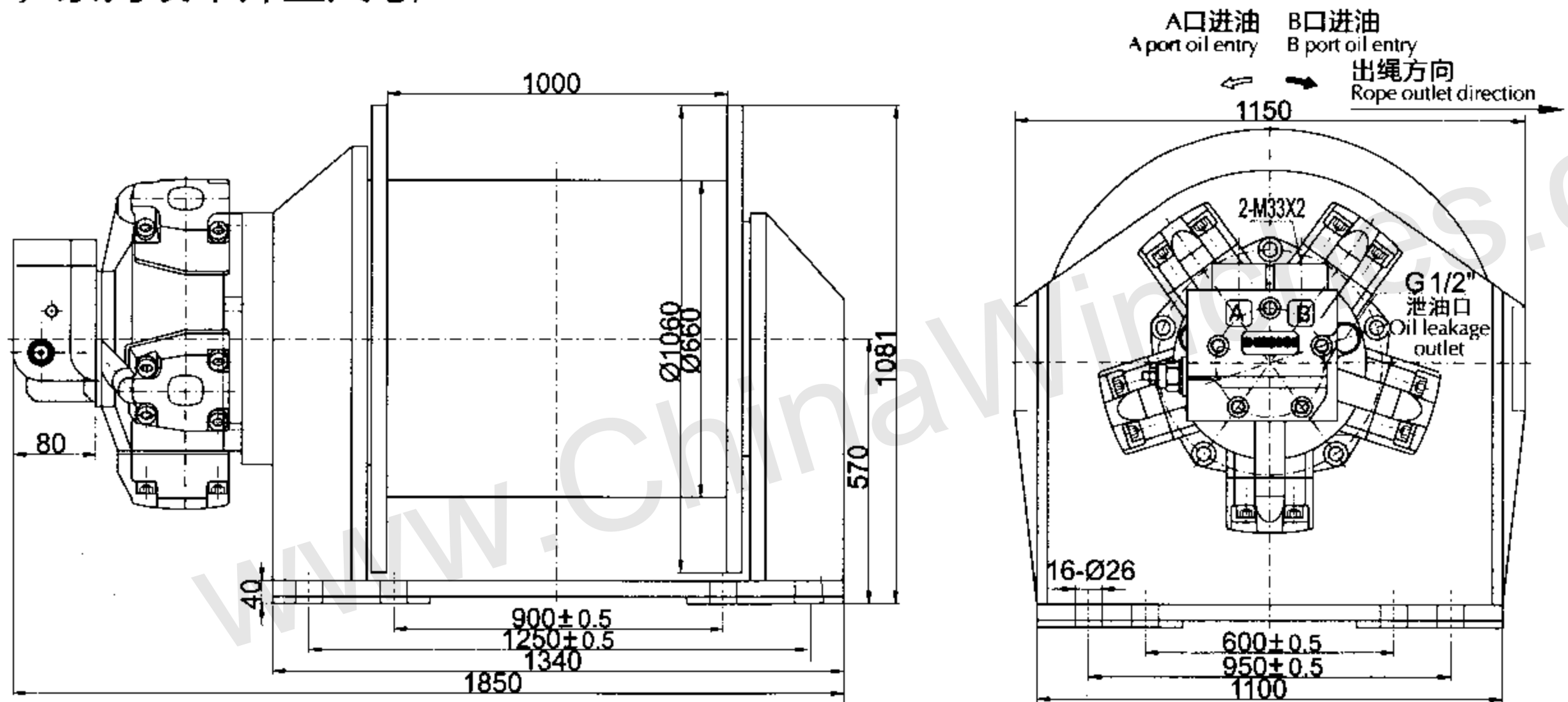
XHJ6系列绞车外型尺寸/Series Winch Dimension



XHJ6系列绞车技术参数/Series Winch Technical Parameters

型号 Model	第一层 First layer		总排量 Total Displacement (ml/rev)	工作压差 Difference of Working Pressures (MPa)	钢丝绳直径 Steel Wire Diameter (mm)	容绳量 Rope Capacity (m)	液压马达型号 Model of Hydraulic Motor	行星减速器 型号 Model of Planetary Reducer	重量 (kg) Weight (kg)
	拉力(KN) Pull force	绳速(m/min) Rope Speed							
XHJ6-120-176-30-ZPH	120	0-30	16714	17	30	176	XHM31-3000D480101	C6D	2300
XHJ6-150-153-34-ZPH	150	0-30	19904	18	34	153	XHM31-3500D480101	C6D	2300
XHJ6-180-143-38-ZPH	180	0-30	23430	18	38	143	XHM31-4000D480101	C6D	2300

XHJ7系列绞车外型尺寸/Series Winch Dimension



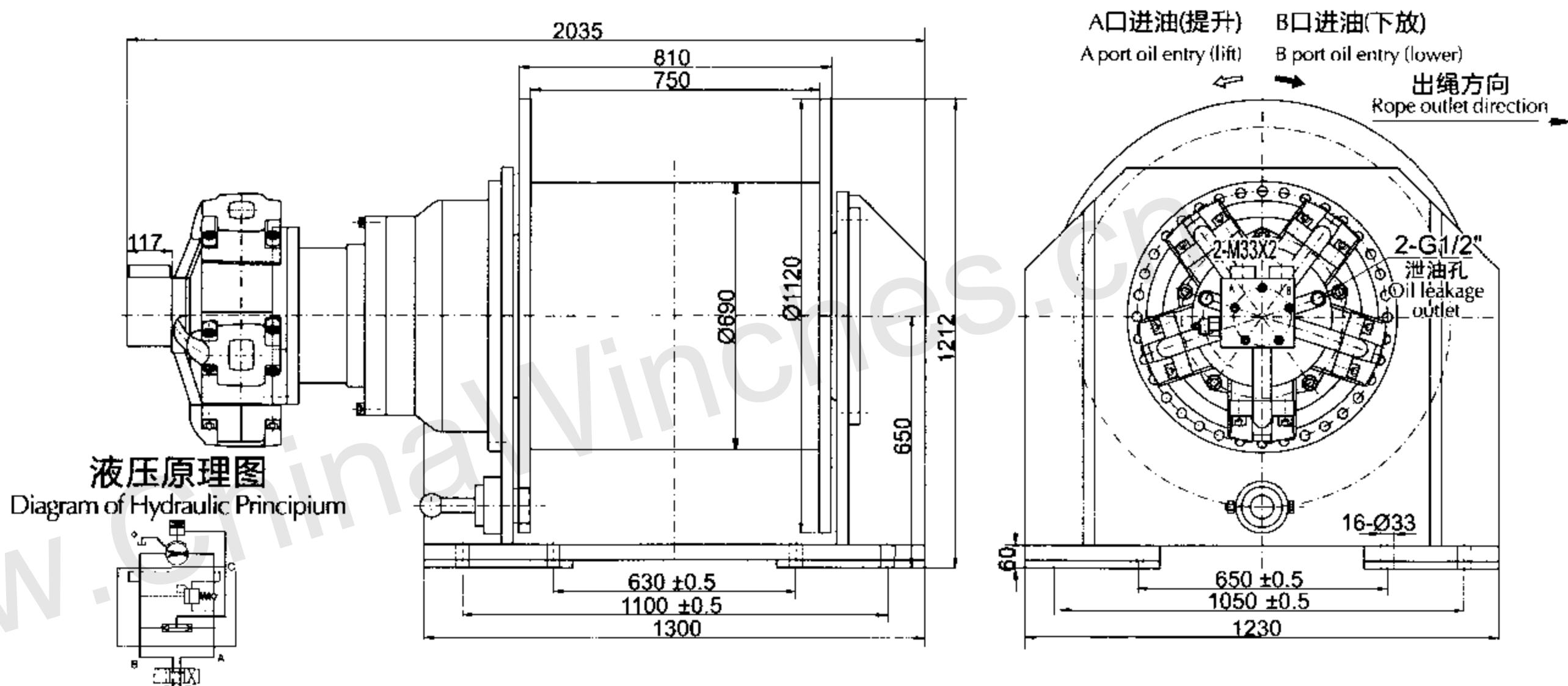
XHJ7系列绞车技术参数/Series Winch Technical Parameters

型号 Model	第一层 First layer		总排量 Total Displacement (ml/rev)	工作压差 Difference of Working Pressures (MPa)	钢丝绳直径 Steel Wire Diameter (mm)	容绳量 Rope Capacity (m)	液压马达型号 Model of Hydraulic Motor	行星减速器 型号 Model of Planetary Reducer	重量 (kg) Weight (kg)
	拉力(KN) Pull force	绳速(m/min) Rope Speed							
XHJ7-200-150-40-ZPH	200	0-32	27434	18.0	40	150	XHM40-5000D480101	C7D	2800
XHJ7-240-140-42-ZPH	240	0-32	34710	17.3	42	140	XHM40-6300D240101	C7D	2800

注：1.工作压差为绞车工作时AB进出油口的压力差;2.容绳量指的是三层时的容绳量

Note: 1.the differential pressure at work and for the winch AB pressure oil mouths, 2 Rope capacity is three layers of rope capacity

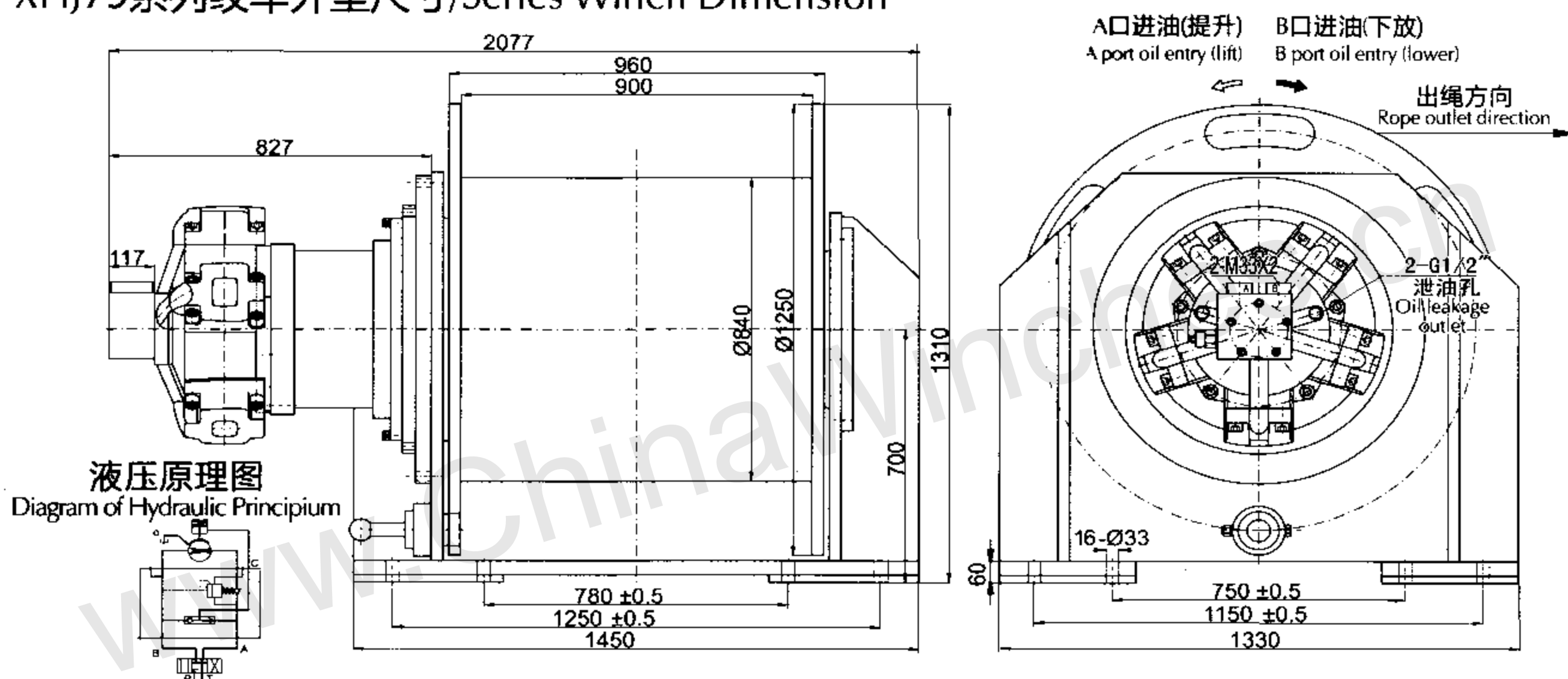
XHJ67系列绞车外型尺寸/Series Winch Dimension



XHJ67系列绞车技术参数/Series Winch Technical Parameters

型号 Model	第一层 First layer		总排量 Total Displacement (ml/rev)	工作压差 Difference of Working Pressures (MPa)	钢丝绳直径 Steel Wire Diameter (mm)	容绳量 Rope Capacity (m)	液压马达型号 Model of Hydraulic Motor	行星减速器 型号 Model of Planetary Reducer	重量 (kg)
	拉力(KN) Pull force	绳速(m/min) Rope Speed							
XHJ67-250-110-42-ZPH	250	0-14	51488	13.5	42	110	XHM31-3150D480101	C67-16	3600
XHJ67-280-105-44-ZPH	280	0-14	55392	14.0	44	105	XHM31-3500D480101	C67-16	3600

XHJ79系列绞车外型尺寸/Series Winch Dimension



XHJ79系列绞车技术参数/Series Winch Technical Parameters

型号 Model	第一层 First layer		总排量 Total Displacement (ml/rev)	工作压差 Difference of Working Pressures (MPa)	钢丝绳直径 Steel Wire Diameter (mm)	容绳量 Rope Capacity (m)	液压马达型号 Model of Hydraulic Motor	行星减速器 型号 Model of Planetary Reducer	重量 (kg)
	拉力(KN) Pull force	绳速(m/min) Rope Speed							
XHJ79-300-155-44-ZPH	300	0-16	55392	17.8	44	155	XHM31-3500D480101	C79-16	4500
XHJ79-350-150-46-ZPH	350	0-16	66432	17.5	46	150	XHM31-4000D480101	C79-16	4500
XHJ79-400-145-48-ZPH	400	0-16	72384	18.2	48	145	XHM31-4500D480101	C79-16	4500

注：1.工作压差为绞车工作时AB进出油口的压力差；2.容绳量指的是三层时的容绳量

Note: 1.the differential pressure at work and for the winch AB pressure oil mouths, 2.Rope capacity is three layers of rope capacity