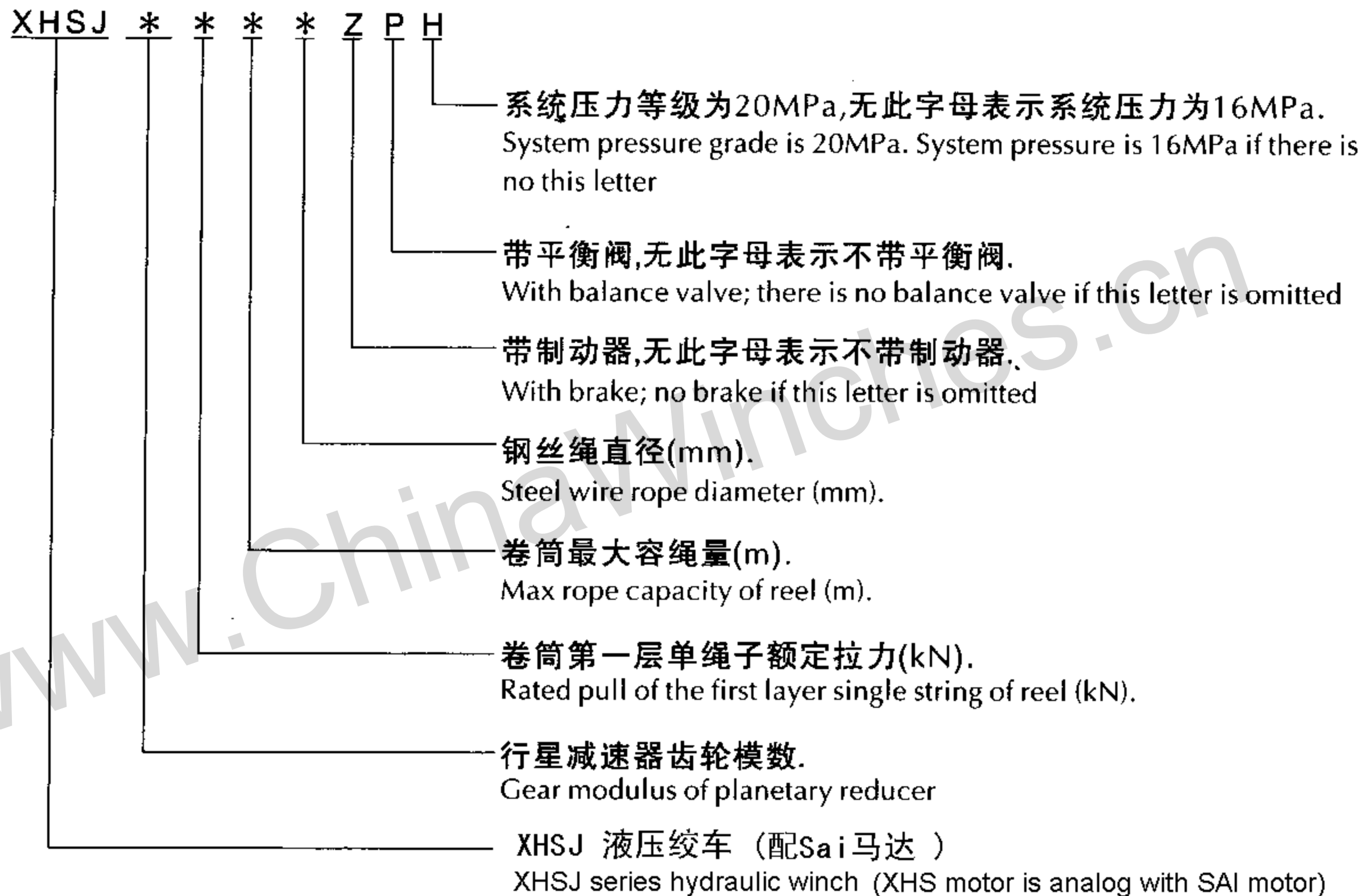


# XHSJ series hydraulic winch

## 型号说明/Description of Model



## 参数说明/Description of parameters

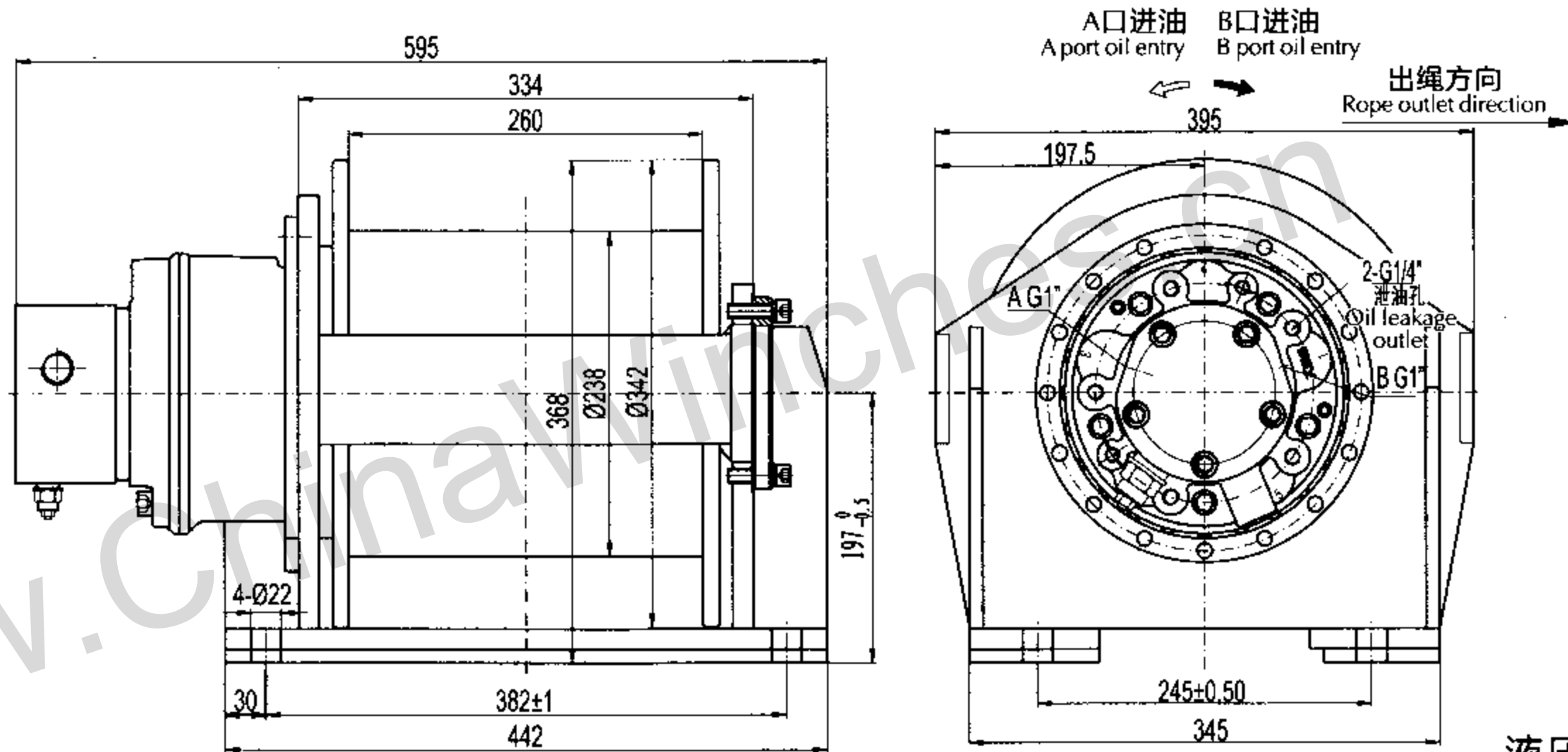
- (1)、该系列绞车的总排量为卷筒每转一转的供油量。
  - (2)、供油量是泵站的理论流量，即在考虑系统效率90%的情况下所得的计算值。
  - (3)、容绳量为绞车的理论最大容绳量，实际允许的有效容绳量应考虑保留3圈钢丝绳不用，以防绳头脱出。
- (1). The total displacement of the series of winch is the oil supply quantity when the reel rotates one circle.
  - (2). The oil supply quantity is the theoretical flow of the pump station, namely, the calculated value of pump station under the conditions of considering the system efficiency of 90%.
  - (3). The rope capacity of reel is the theoretical max capacity to hold the rope. The actually allowable effective rope capacity should consider keeping 3 loops of steel wire rope unused to prevent the rope end from disengagement.

For example:

XHJ6-120-315-30-ZPH indicates:

The hydraulic winch with planetary reducer modulus of 6 and the pull force of 120KN (12 ton) at the first layer, the rope capacity of the drum is 315M, and diameter of the rope is 30mm. It has brake and the balance valve and hydraulic pressure is 20Mpa.

### XHSJ2.5系列绞车外型尺寸/Series Winch Dimension

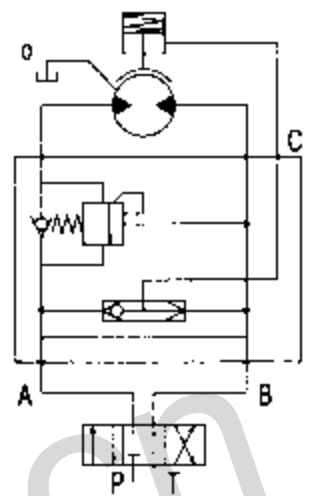


液压原理图

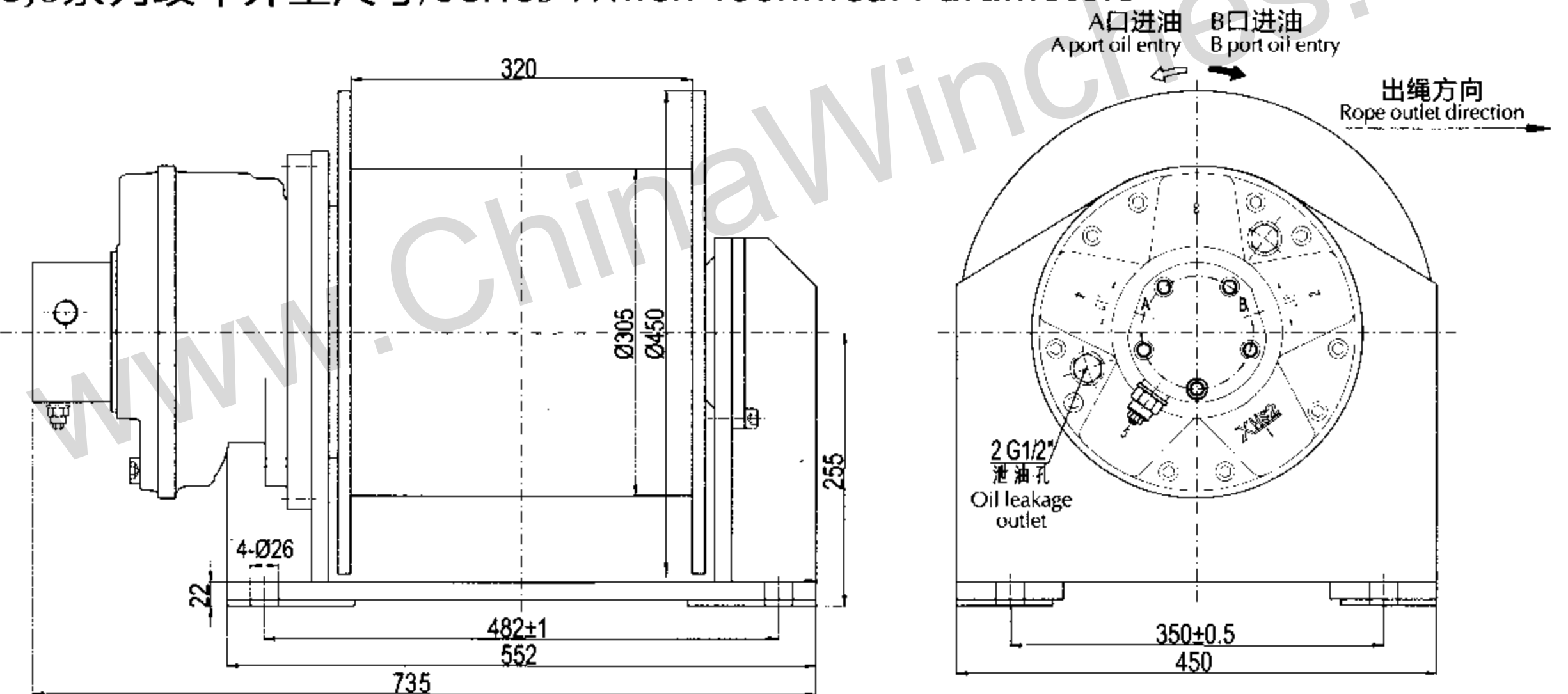
Diagram of Hydraulic Principium

### XHSJ2.5系列绞车技术参数/Series Winch Technical Parameters

型号 Model	第一层 First layer		卷筒底径 Reel Bottom Diameter (mm)	总排量 Total Displacement (ml/rev)	工作压差 Difference of Working Pressures (MPa)	钢丝绳直径 Steel Wire Diameter (mm)	容绳量 Rope Capacity (m)	液压马达型号 Model of Hydraulic Motor	行星减速器 型号 Model of Planetary Reducer
	拉力(KN) Pull force	绳速(m/min) Rope Speed							
XHSJ2.5-10-60-10-ZP	10	0-30	238	575	15	10	60	XHS05-110D51	C2.5-5
XHSJ2.5-20-50-12-ZP	20	0-30	238	1050	15	12	50	XHS05-200D51	C2.5-5.5



### XHSJ3系列绞车外型尺寸/Series Winch Technical Parameters

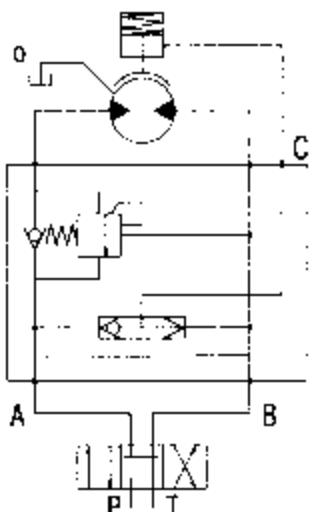


液压原理图

Diagram of Hydraulic Principium

### XHSJ3系列绞车技术参数/Series Winch Technical Parameters

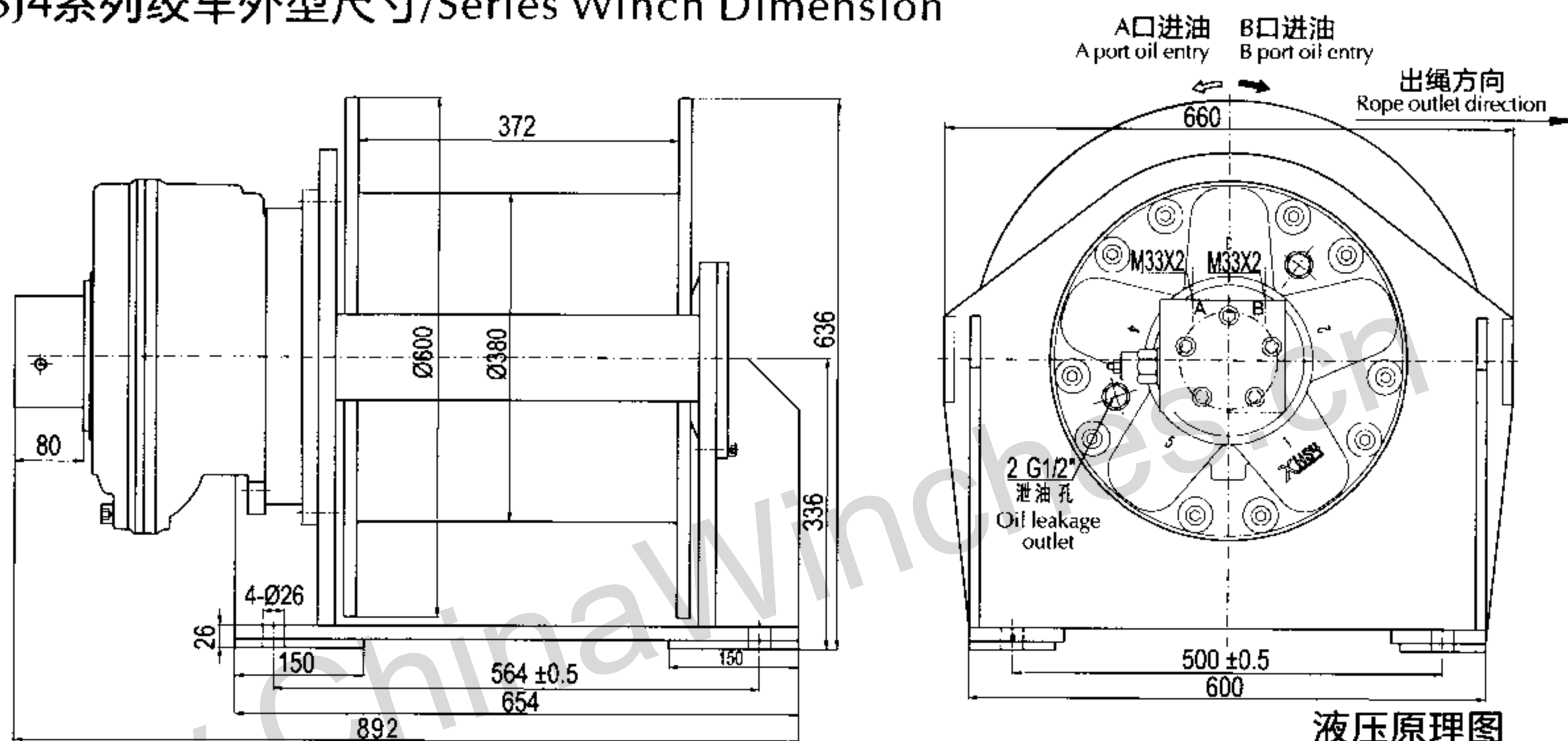
型号 Model	第一层 First layer		卷筒底径 Reel Bottom Diameter (mm)	总排量 Total Displacement (ml/rev)	工作压差 Difference of Working Pressures (MPa)	钢丝绳直径 Steel Wire Diameter (mm)	容绳量 Rope Capacity (m)	液压马达型号 Model of Hydraulic Motor	行星减速器 型号 Model of Planetary Reducer
	拉力(KN) Pull force	绳速(m/min) Rope Speed							
XHSJ3-30-65-15-ZP	30	0-35	305	2125	15.9	15	65	XHS2-420D120101	C3-5
XHSJ3-40-65-16-ZP	40	0-35	305	2711.5	16.6	16	65	XHS2-500D120101	C3-5.5



注：1.工作压差为绞车工作时AB进出油口的压力差；2.容绳量指的是三层时的容绳量

Note: 1. the differential pressure at work and for the winch AB pressure oil mouths, 2. Rope capacity is three layers of rope capacity

### XHSJ4系列绞车外型尺寸/Series Winch Dimension

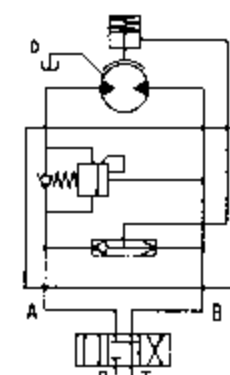


液压原理图

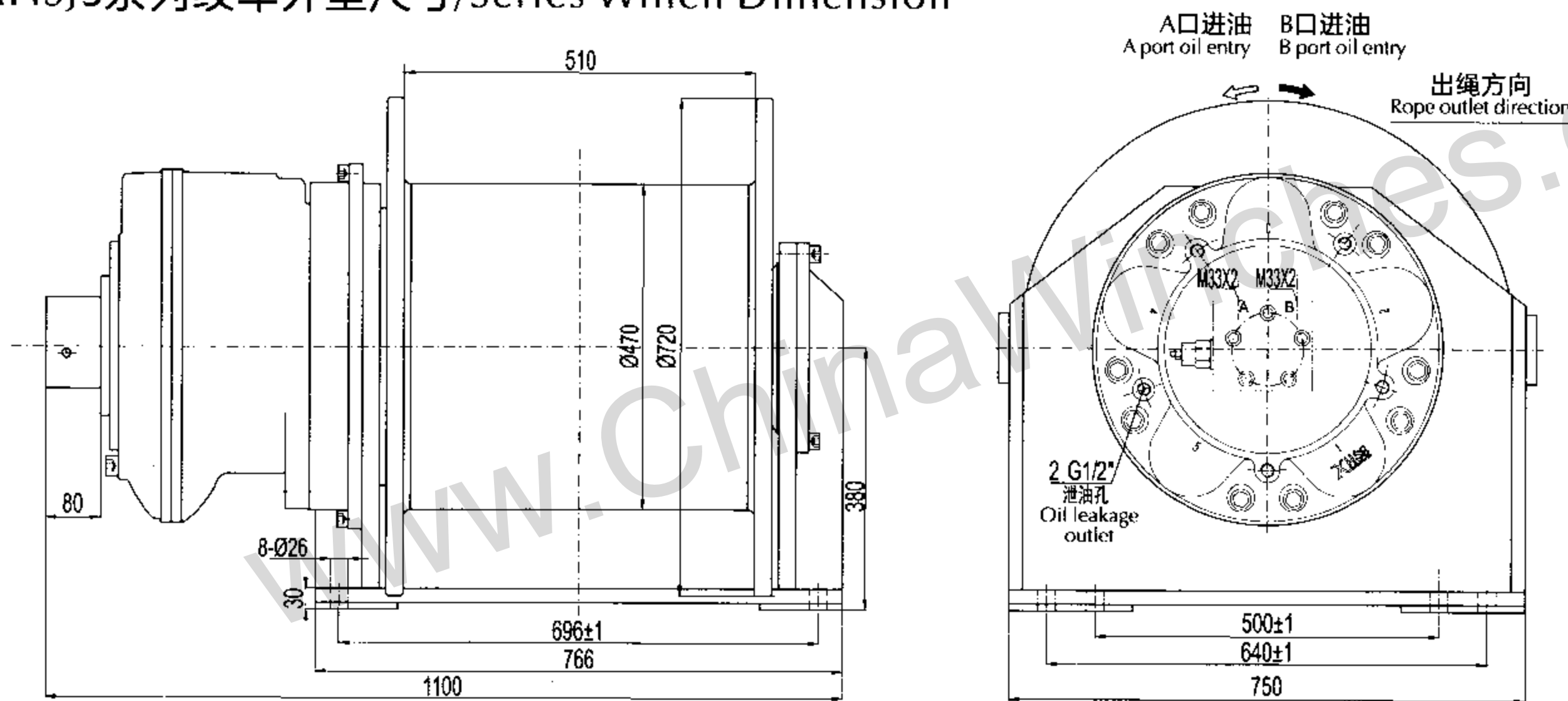
Diagram of Hydraulic Principium

### XHSJ4系列绞车技术参数/Series Winch Technical Parameters

型号 Model	第一层 First layer		卷筒底径 Reel Bottom Diamete (mm)	总排量 Total Displacement (ml/rev)	工作压差 Difference of Working Pressures (MPa)	钢丝绳直径 Steel Wire Diameter (mm)	容绳量 Rope Capacity (m)	液压马达型号 Model of Hydraulic Motor	行星减速器 型号 Model of Planetary Reducer
	拉力(KN) Pull force	绳速(m/min) Rope Speed							
XHSJ4-50-87-20-ZP	50	0-40	380	4365	16.3	20	87	XHS3-900D240101	C4-5
XHSJ4-60-68-21.5-ZP	60	0-40	380	5428.5	16	21.5	68	XHS3-1000D240101	C4-5.5



### XHSJ5系列绞车外型尺寸/Series Winch Dimension

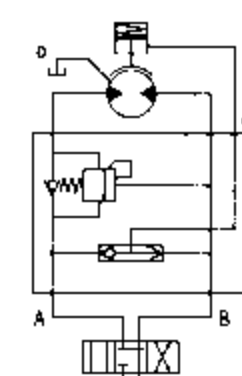


液压原理图

Diagram of Hydraulic Principium

### XHSJ5系列绞车技术参数/Series Winch Technical Parameters

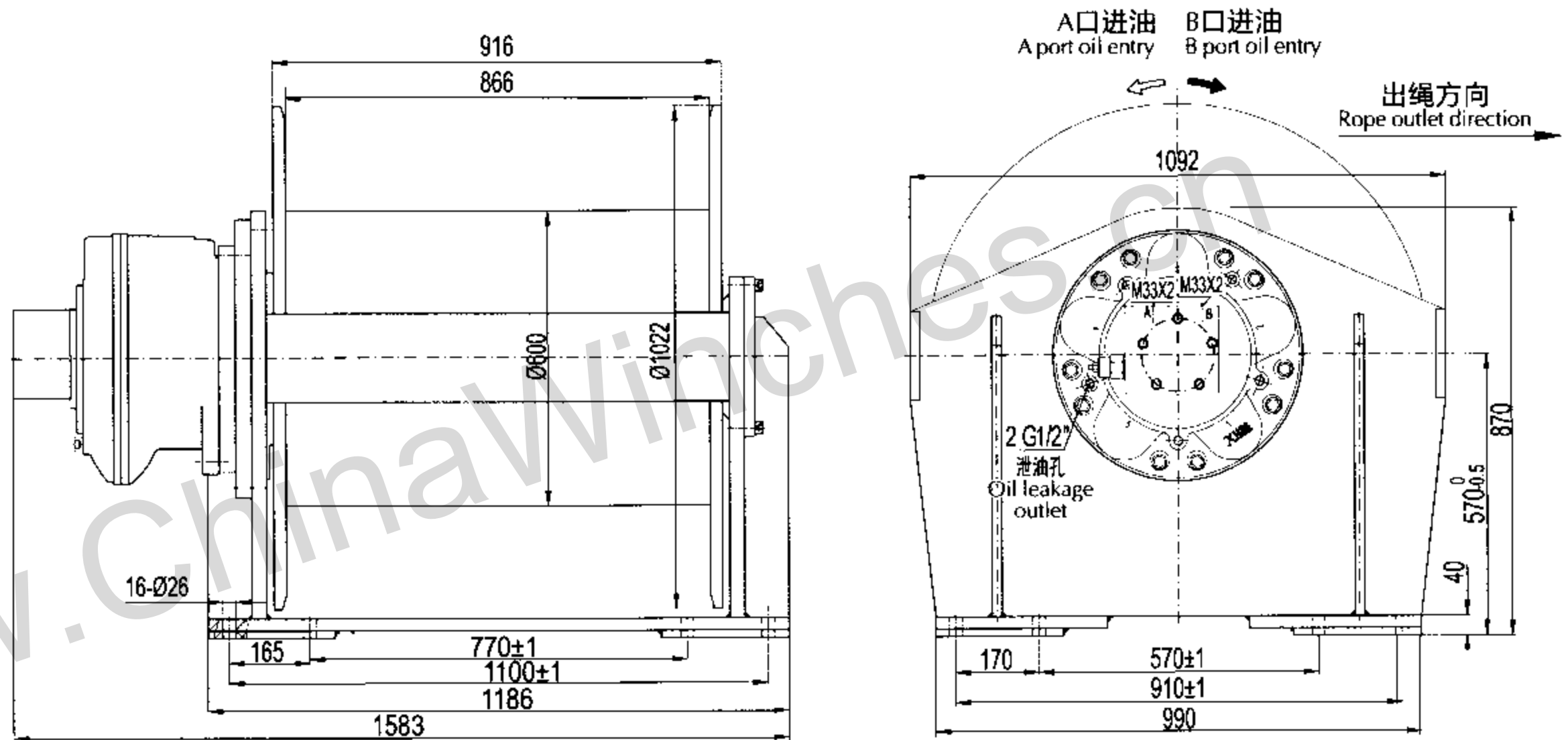
型号 Model	第一层 First layer		卷筒底径 Reel Bottom Diamete (mm)	总排量 Total Displacement (ml/rev)	工作压差 Difference of Working Pressures (MPa)	钢丝绳直径 Steel Wire Diameter (mm)	容绳量 Rope Capacity (m)	液压马达型号 Model of Hydraulic Motor	行星减速器 型号 Model of Planetary Reducer
	拉力(KN) Pull force	绳速(m/min) Rope Speed							
XHSJ5-80-100-24-ZP	80	0-40	470	9080	15.6	24	100	XHS5-1800D240101	C5-5
XHSJ5-100-90-28-ZP	100	0-40	470	11039	16	28	90	XHS5-2000D240101	C5-5.5



注：1.工作压差为绞车工作时AB进出油口的压力差;2.容绳量指的是三层时的容绳量

Note: 1.the differential pressure at work and for the winch AB pressure oil mouths, 2 Rope capacity is three layers of rope capacity

### XHSJ6系列绞车外型尺寸/Series Winch Dimension

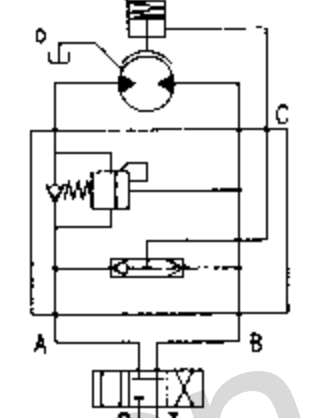


液压原理图

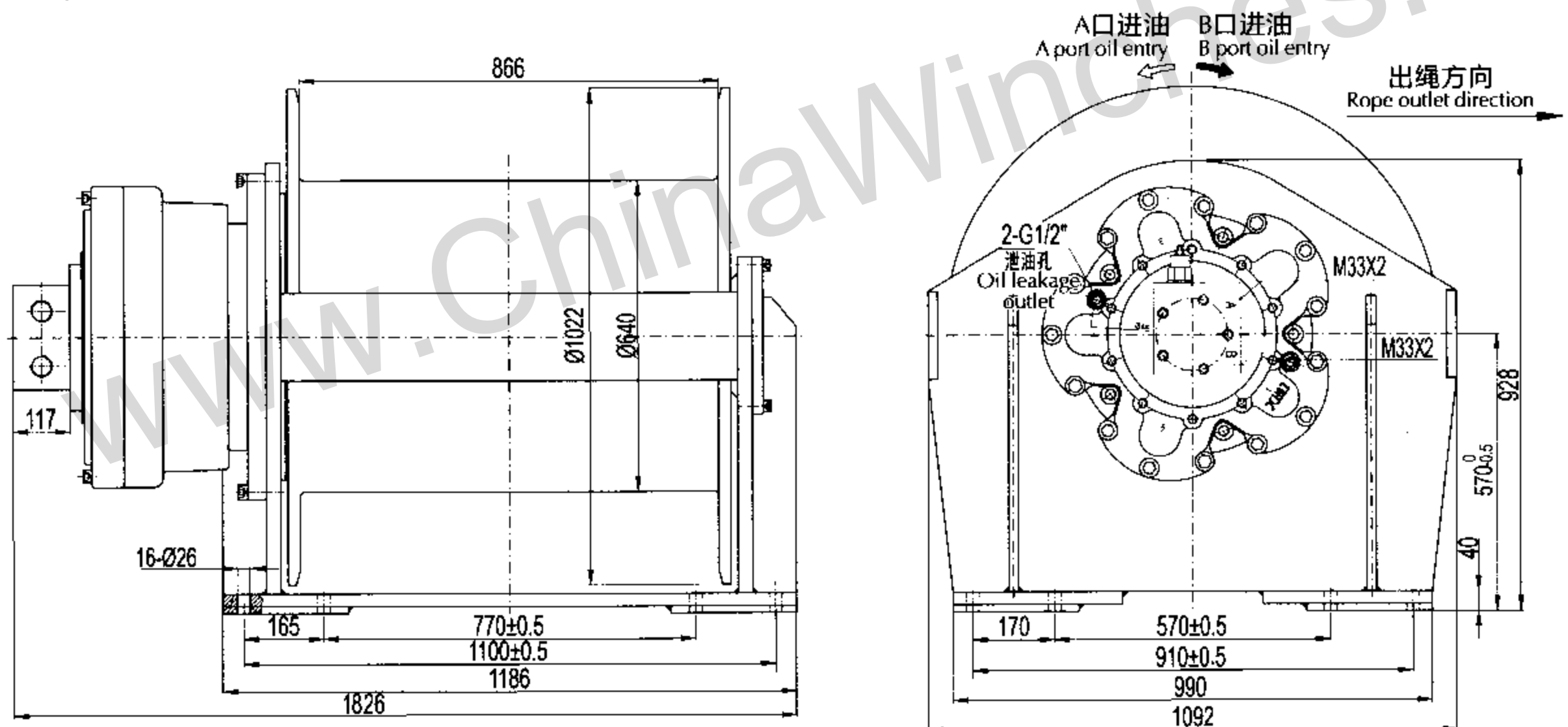
Diagram of Hydraulic Principium

### XHSJ6系列绞车技术参数/Series Winch Technical Parameters

型号 Model	第一层 First layer		卷筒底径 Reel Bottom Diameter (mm)	总排量 Total Displacement (ml/rev)	工作压差 Difference of Working Pressures (MPa)	钢丝绳直径 Steel Wire Diameter (mm)	容绳量 Rope Capacity (m)	液压马达型号 Model of Hydraulic Motor	行星减速器 型号 Model of Planetary Reducer
	拉力(KN) Pull force	绳速(m/min) Rope Speed							
XHSJ6-120-176-30-ZP	120	0-30	600	16725	17.0	30	175	XHS6-3000D480101	C6-5.5
XHSJ6-150-150-34-ZP	150	0-25	600	16725	19.8	34	150	XHS6-3000D480101	C6-5.5



### XHSJ7系列绞车外型尺寸/Series Winch Dimension

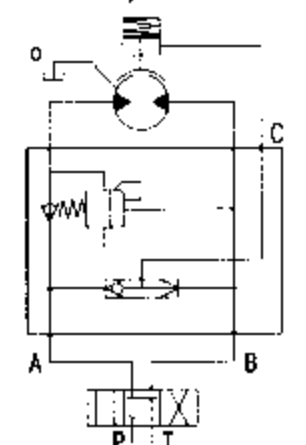


液压原理图

Diagram of Hydraulic Principium

### XHSJ7系列绞车技术参数/Series Winch Technical Parameters

型号 Model	第一层 First layer		卷筒底径 Reel Bottom Diameter (mm)	总排量 Total Displacement (ml/rev)	工作压差 Difference of Working Pressures (MPa)	钢丝绳直径 Steel Wire Diameter (mm)	容绳量 Rope Capacity (m)	液压马达型号 Model of Hydraulic Motor	行星减速器 型号 Model of Planetary Reducer
	拉力(KN) Pull force	绳速(m/min) Rope Speed							
XHSJ7-180-143-38-ZP	180	0-30	640	23639	17.8	38	143	XHS7-4300D480101	C7-5.5



注：1.工作压差为绞车工作时AB进出油口的压力差；2.容绳量指的是三层时的容绳量

Note: 1.the differential pressure at work and for the winch AB pressure oil mouths, 2 Rope capacity is three layers of rope capacity